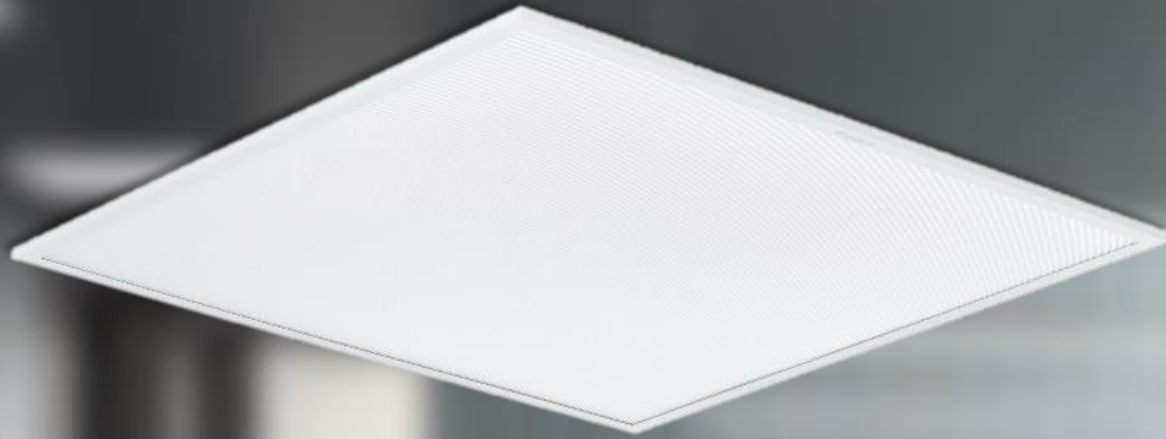




Product novelties
to the Trade Price List of Signify
valid from 01.04.2024

March 2024



Philips Ledinaire Panel G5
RCØ65B
5th generation panel family

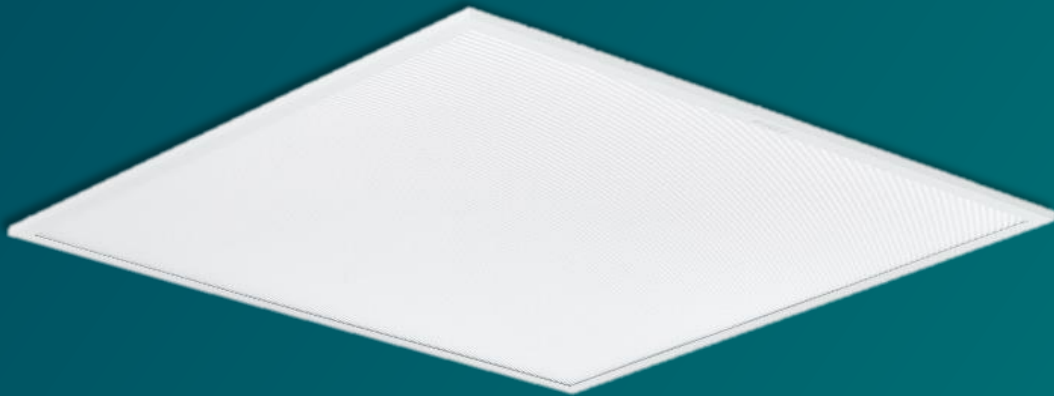
Philips Ledinaire Panel G5 RC065B



Reliable and energy-efficient - the latest 5th generation of Ledinaire Gen5 RC065B LED panels are designed for excellent lighting in a wide range of applications.

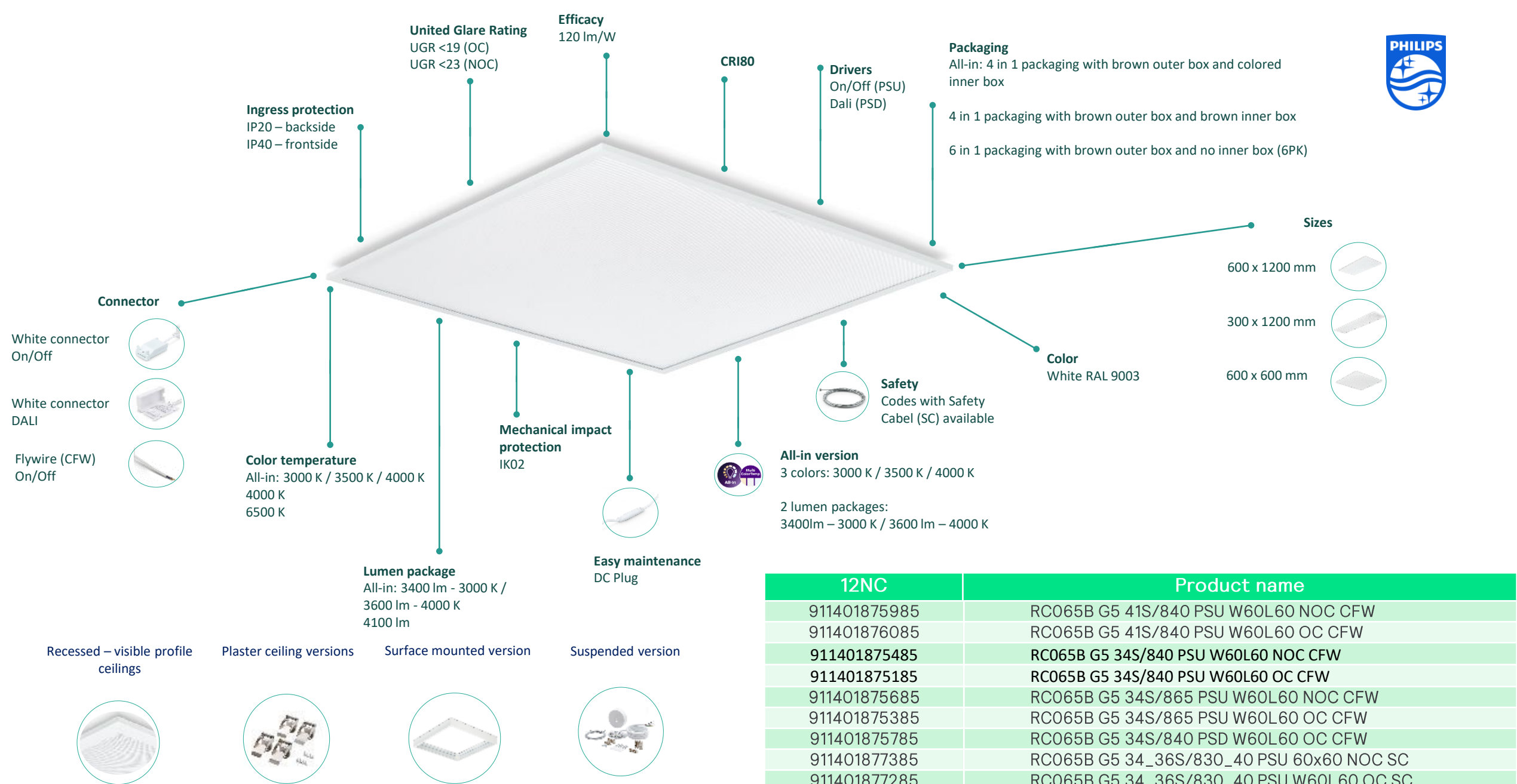
Benefits

- An aesthetic and energy-saving replacement for classic raster fixtures
- Up to 4 100 lm
- Reliable operation, economical housing from the Philips brand
- Good quality and high effectiveness
- Quick and easy assembly



Characteristics

- Luminous flux: 3 400 lm, 3 600 lm, 4 100 lm
- Luminous efficiency: 120 lm/W
- Color temperature: 3 000 K, 3 500 K, 4 000 K, 6 500 K
- CRI 80 with SDCM <5
- Lifetime: 75 000h for L70 & 50 000h for L80
- 5-year warranty
- IP20/IP40
- Flywire connector available – for quick and easy connection
- Dimensions: 60 x 60 cm / 30 x 120 cm / 60 x 120 cm
- Power supplies: PSU and PSD
- NOC and OC versions



12NC	Product name
911401875985	RC065B G5 41S/840 PSU W60L60 NOC CFW
911401876085	RC065B G5 41S/840 PSU W60L60 OC CFW
911401875485	RC065B G5 34S/840 PSU W60L60 NOC CFW
911401875185	RC065B G5 34S/840 PSU W60L60 OC CFW
911401875685	RC065B G5 34S/865 PSU W60L60 NOC CFW
911401875385	RC065B G5 34S/865 PSU W60L60 OC CFW
911401875785	RC065B G5 34S/840 PSD W60L60 OC CFW
911401877385	RC065B G5 34_36S/830_40 PSU 60x60 NOC SC
911401877285	RC065B G5 34_36S/830_40 PSU W60L60 OC SC
911401877585	RC065B G5 34_36S/830_40 PSU 30x120 OC SC
911401876985	RC065B G5 60S/840 PSU 60x120 NOC TPb CFW
911401875485	RC065B G5 34S/840 PSU W60L60 NOC CFW

Accessories for Philips Ledinaire G5 panels

All accessory codes will remain the same as the previous generation

12NC	Accessory name	Link to the product page
911401892680	RC065Z SC	RC065Z SC 911401892680 Philips lighting
911401862782	RC065Z SMB W60L60 G2	RC065Z SMB W60L60 G2 911401862782 Philips lighting
911401805681	RC065Z SME-3 WH	RC065Z SME-3 WH 911401805681 Philips lighting
911401824180	RC007Z SMB-PLC	RC007Z SMB-PLC - Ledinaire Panel (signify.com)

Ledinaire panel
RC065Z SC



Ledinaire panel
RC065Z SMB W60L60



Ledinaire panel
RC065Z SME-3 WH



Ledinaire panel
RC007Z SMB-PLC





Philips Ledinaire EcoSet

modern and wireless office lighting system

Philips Ledinaire EcoSet – the new office lighting system

The **Philips Ledinaire EcoSet RC075 panel** is a unique plug-and-play wireless solution. It offers the possibility of greater energy savings and enables simple automated lighting in offices or schools. Our latest innovation enables LED lighting panels to work with an external wired PIR sensor (motion and daylight detection). The light sensor function enables automatic dimming of the luminaire. Setup is simple thanks to the remote control, so the lights are ready to go in the blink of an eye. A wireless wall switch is also available.



1 Install the fixtures as normal.



2 Install sensors in selected locations.



3 Configure the system using the remote control by connecting fixtures, sensors and, optionally, a wall switch.

Philips Ledinaire EcoSet – the new office lighting system



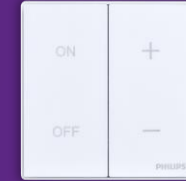
Ledinaire panel
EcoSet
(OC version)



Ledinaire office
sensor EcoSet



Ledinaire remote
EcoSet



Optional: Ledinaire wall
switch EcoSet

Here's how it works



Ledinaire EcoSet luminaire
with integrated wireless controls



External motion and
daylight detection sensor



Automatic dimming
and switching

Philips Ledinaire EcoSet – codes

12NC	Product name	
911401877685	Ledinaire panel EcoSet	RC075 34S/840 ESW W60L60 OC EcoSet SC
911401562943	Ledinaire office sensor EcoSet	EXT2010 OCC DL PIR AC Sensor RS WH ESW
911401562843	Ledinaire wall switch EcoSet	EcoSet BLE Wall Switch
911401562743	Ledinaire remote controller EcoSet	EcoSet BLE IR Remote Controller



Ledinaire panel EcoSet



Ledinaire office sensor
EcoSet



Ledinaire wall switch
EcoSet



Ledinaire remote
controller EcoSet



Philips Ledinaire Downlight DNØ70

Philips Ledinaire Downlight DNØ70



The new **Philips Ledinaire Downlight DNØ70** offers excellent light quality and high efficiency. It is available in two sizes with two options for light output and color temperature.

Benefits

- Less glare thanks to the deep location of the LED source – better uniformity and visual comfort
- Better IP rating compared to standard versions: frontside IP54 (backside IP20)
- High luminous flux of 2 400 lm for the D200 version
- 5 years warranty

Characteristics

- Durability 50 000 hours at L65
- IP20 backside and IP54 from the front
- Available in two sizes: Ø145~155 mm and Ø195~205 mm
- Color temperature: 3 000 K or 4 000 K
- External high-quality driver – PF 0.9
- Optical design provides glare protection



Philips Ledinaire Downlight DNØ70



The new **Philips Ledinaire Downlight DNØ70** offers excellent light quality and high efficiency. It is available in two sizes with two options for light output and color temperature.

Specification		
Product name	D150 LED12	D200 LED24
Cutout sizes	Ø145 ~155 mm	Ø195 ~205 mm
Luminous flux	1 200 lm	2 400 lm
Wattage	12 W	24 W
Dimensions	Ø 170 x 82 mm	Ø 225 x 100 mm
Weight	0.44 kg	0.66 kg
CCT	3 000 K / 4 000 K	
CRI	≥80	
Beam angle	60°	
IP rating	IP54 (IP20 backside)	
Lifetime	50 000 h L65 Ta 25°C	
Operating temp.	-20°C < Ta < 40°C	
Input voltage	220 – 240 V, 50/60 Hz	
Power factor	0.9	



Why is it worth choosing LEDs with a high-power factor?

Watch the video and read the article





Philips Ledinaire ClearAccent All-in RS071B Spotlight & accessories

Philips Ledinaire ClearAccent All-in RSØ71B

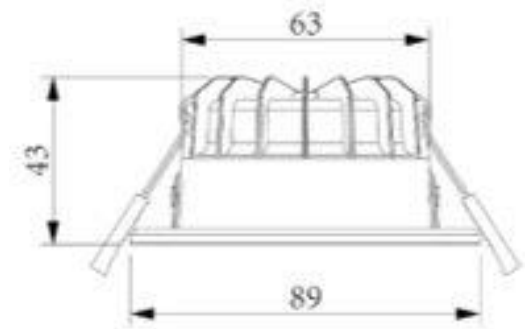
Ledinaire ClearAccent All-in RSØ71B are recessed fixtures that provide excellent light performance and easily fit into any design. This is ensured by interchangeable housing colors, an adjustable head, three color temperatures and a high degree of protection.

Benefits

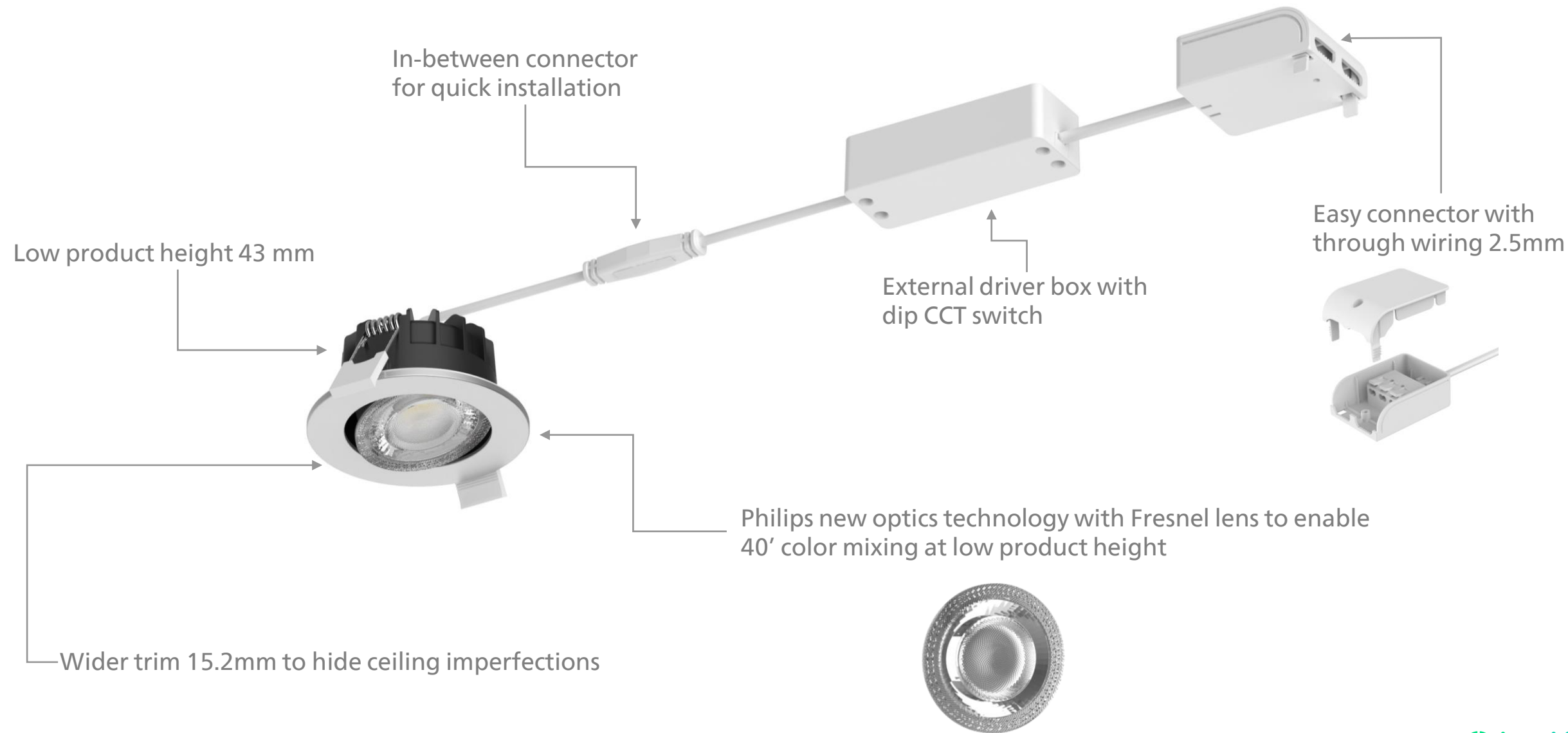
- Variable light color temperatures
- Two basic color variants of the housing (white or black), which can be changed with silver or gold accessories
- External driver box and easy connector – with in-between connector for quick installation
- Philips new optics technology using a Fresnel lens, allowing you to change the color temperature at low product height
- 5 years warranty
- Wider trim 15.2 mm, for masking the imperfections of the mounting hole

Characteristics

- Durability 50 000 hours at L65
- Luminous flux: 550 lm
- Size: Ø89 mm, cutout: Ø63 mm
- Variable color temperatures: 2 700 K / 3 000 K / 4 000 K
- Dimmable
- IP65 protection level and resistance class II – suitable for bathrooms
- Low product height – 43 mm
- Lighting angle: 40° or 60°



Philips Ledinaire ClearAccent All-in RSØ7IB



Philips Ledinaire ClearAccent All-in RS071B



Specification				
Product name	RS071B 40D WH	RS071B 40D BK	RS071B 60D WH	RS071B 60D BK
Product color	White	Black	White	Black
Cut out size	Ø 63 mm			
Luminous flux	550 lm			
Wattage	6 W			
Dimensions	Ø 89 mm x 43 mm			
CCT	2 700 K / 3 000 K / 4 000 K			
CRI	≥80			
Beam angle	40°	40°	60°	60°
IP rating	IP65 (frontside)			
Protection class	II			
Lifetime	50 000 hours L65			
Working temp.	-20°C < Ta < +40°C			
Input voltage	220 – 240 V, 50/60 Hz			
Power factor	0.8			
Dimmable	Yes			
Driver	External			
Connector box	Easy connector box through wiring 2.5mm			

Codes list	
12NC	Product name
929003322502	RS071B 5S/827_830_840 40D PSR IP65 TW WH
929003322602	RS071B 5S/827_830_840 40D PSR IP65 TW BK
929003322702	RS071B 5S/827_830_840 60D PSR IP65 TW WH
929003322802	RS071B 5S/827_830_840 60D PSR IP65 TW BK
929003322902	RS071B Trim Accessory GD
929003323002	RS071B Trim Accessory SI





Philips Coreline Fastset

Philips Coreline FastSet family



Philips Coreline FastSet is an energy-saving 1:1 LED replacement for conventional luminaires for high-traffic areas such as passageways or break rooms.

Benefits

- Thanks to the identical luminous flux package as in the case of conventional lighting, there is no need to perform new lighting calculations in the case of modernization projects.
- Universal design allows you to switch between color temperatures (CCT) and lumen package in the same fixture to suit your needs in Multi Switch versions
- They can be easily connected to other Coreline FastSet fixtures to create lines of light. If necessary, accessories are also available to adapt Coreline luminaires for suspended mounting.
- Interact Ready luminaire options with the ability to connect to an Interact control system.

Characteristics

- IP44, IK06
- Available in sizes: 602 mm, 1160 mm and 1440 mm
- Luminous flux up to 6000 lm
- Color 4 000 K and Multi CCT version: 3 000 K, 4 000 K
- Efficacy up to 140 lm/W
- Through wiring
- Surface mounted or suspended
- Head-to-head assembly, in light lines without screws

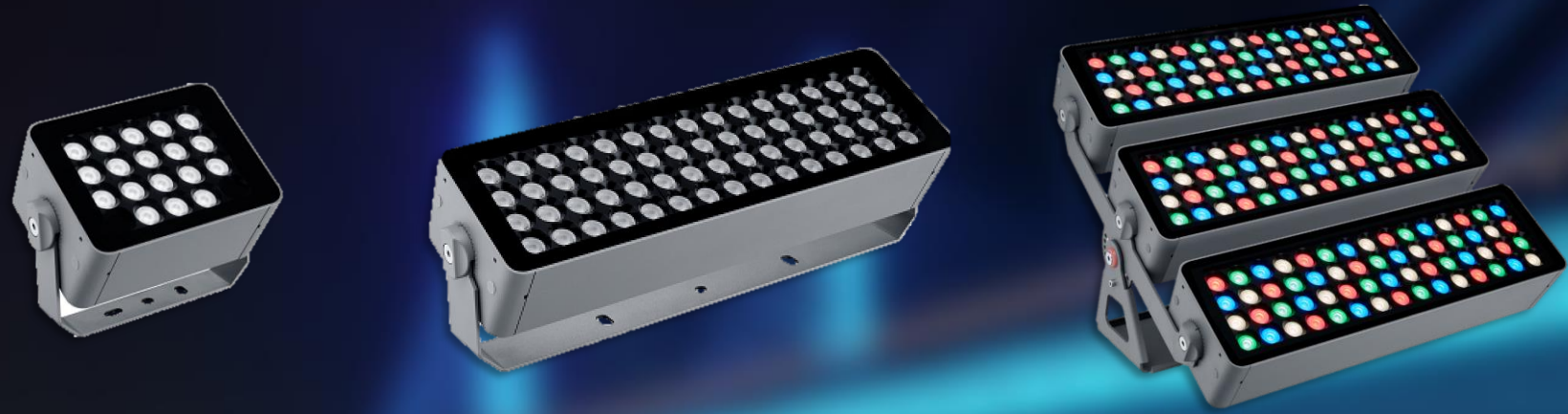


Philips Coreline FastSet family



12NC	Product name
911401841385	SM155C 17S_25S/830_840 PSU TW3 PI5 L602
911401841485	SM155C 30_48S/830_840 PSU TW3 PI5 L1160
911401841585	SM155C 37_60S/830_840 PSU TW3 PI5 L1440
910505103707	SM155C 30_48S/830_840 PSED TW1 PI5 L1160
910505103708	SM155C 37_60S/830_840 PSED TW1 PI5 L1440
910505103709	SM155C 25S/830_840 WIA TW3 PI5 L602
910505103710	SM155C 48S/830_840 WIA TW3 PI5 L1160
910505103711	SM155C 60S/830_840 WIA TW3 PI5 L1440
911401841185	SM155C 48S/840 PSU TW3 PI5 L1160
911401841285	SM155C 60S/840 PSU TW3 PI5 L1440
911401856685	SM155Z suspension set





Philips UniFlood M G2

Philips UniFlood M G2 family



Philips UniFlood M gen2 projectors are cost-effective, architectural outdoor LED solutions for lighting facades, bridges and all outdoor illuminations

Benefits

- Durable and modular design
- Available in white, monochromatic colors, RGB, RGBW and customizable white with adjustable color temperature
- Easy control via DMX512/RDM possible
- A truly modular spotlight that gives architects and designers the freedom to create a wide range of concepts and designs without limits
- Possibility to adjust the inclination angle of each head and the entire set
- Appropriate lighting effect thanks to diffused lenses – from a narrow point to a wide stream

Characteristics

- IP66, IK06
- RGBW, RGB: 2 700 K, 3 000 K and 4 000 K
- Optional monochromatic colors and customizable white: 5,000K
- Fixture width: 155 – 569 mm
- Control: On/Off or DMX512/RDM



Philips UniFlood M G2 family



12NC	Product name	Product link
911401745433	BVP353 12LED 30K 220V L15 10	BVP353 12LED 30K 220V L15 10 911401745433 Philips lighting
911401745443	BVP353 12LED 40K 220V L15 10	BVP353 12LED 40K 220V L15 10 911401745443 Philips lighting
911401745503	BVP353 12LED RGBNW 220V L15 10 DMX	BVP353 12LED RGBNW 220V L15 10 DMX 911401745503 Philips lighting
911401746513	BVP353 24LED 30K 220V L24 10	BVP353 24LED 30K 220V L24 10 911401746513 Philips lighting
911401746523	BVP353 24LED 40K 220V L24 10	BVP353 24LED 40K 220V L24 10 911401746523 Philips lighting
911401746583	BVP353 24LED RGBNW 220V L24 10 DMX	BVP353 24LED RGBNW 220V L24 10 DMX - UniFlood M G2 Philips





Philips UniEdge BCP 390

Philips UniEdge BCP390



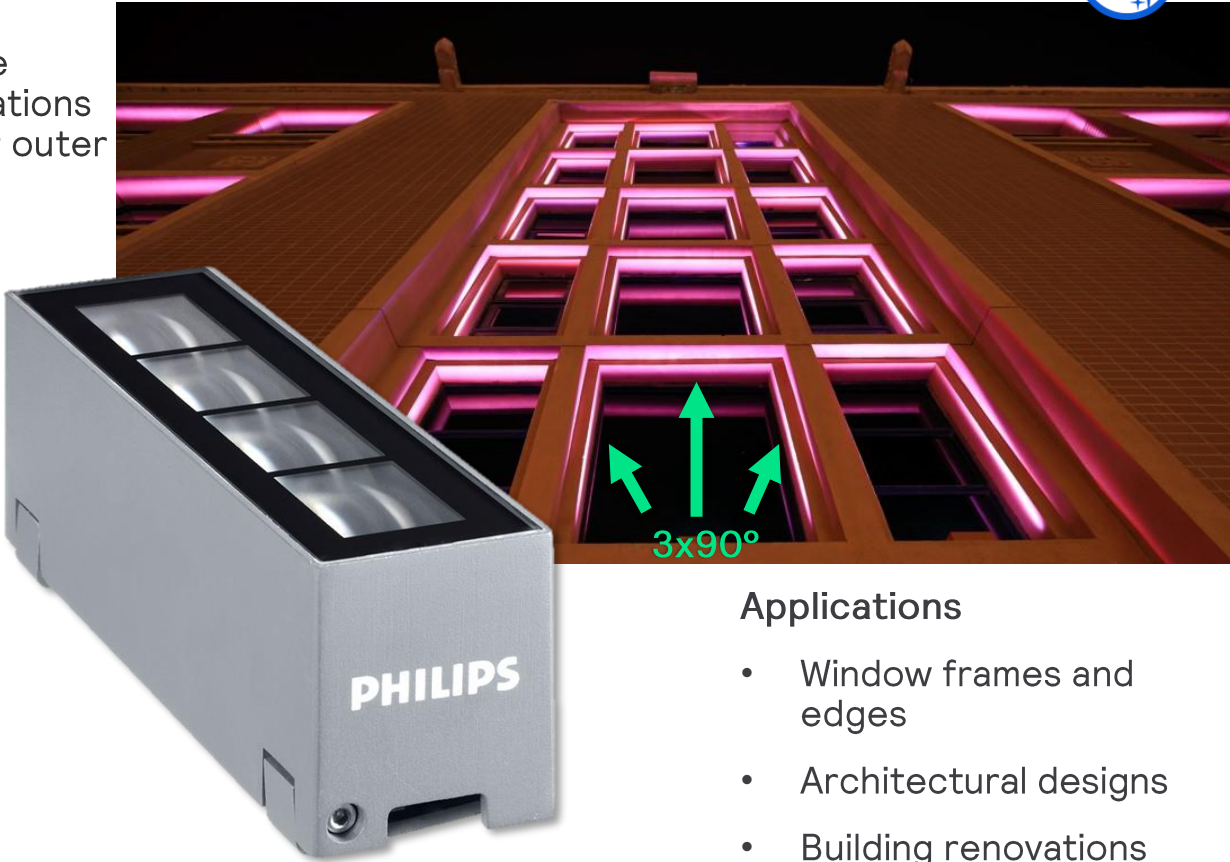
Philips UniEdge is a compact-sized outdoor architectural LED edge lighting designed for façade and outdoor decorative lighting applications with a unique optical distribution that highlights the inner frames or outer edges of windows, balconies or doors.

Benefits

- Available variants: CRI 80 and 2 700 K, 3 000 K, 4 000 K
- CRI 70 – 5 000 K
- Die-cast aluminum body with tempered glass cover

Characteristics

- Unique beam angle of 3x90° thanks to PMMA lenses
- Adjustable tilt angle and IP66/IK06 protection
- Luminous flux up to 165 lm
- Lifetime 50 000 hours



Applications

- Window frames and edges
- Architectural designs
- Building renovations

12NC	Product name
911401737313	BCP390 4LED 30K 24V 3x90 DMX D3
911401737333	BCP390 4LED 40K 24V 3x90 DMX D3
911401737343	BCP390 4LED RGBNW 24V 3x90 DMX (predecessor: 911401739812)



Philips CoreLine Tempo Small G2 BVPIII

Philips CoreLine Tempo Small G2 BVPIII

CoreLine Tempo Small gen2 is perfect for lighting outdoor sports facilities.
Available in several optics and lumen configurations.

Benefits

- IP66
- IK08
- 5-year warranty
- Lifetime 70 000 hours
- Available versions: DALI & Lumistep
- Also available in the flux range from 1 000 lm to 6 300 lm upon order from the configurator
- CE, ENEC, ENEC+ certificates



12NC	Product name	Luminous flux
912300060466	BVP111 LED51-4S/740 OFA52	4 300 lm
912300060467	BVP111 LED51-4S/740 S	4 300 lm
912300060468	BVP111 LED49-4S/730 OFA52	4 200 lm
912300060470	BVP111 LED49-4S/730 S	4 200 lm
912300060469	BVP111 LED73-4S/740 OFA52	6 200 lm



Philips MASTER LEDstrip & Philips CorePro LEDstrip

Philips MASTER LEDstrip



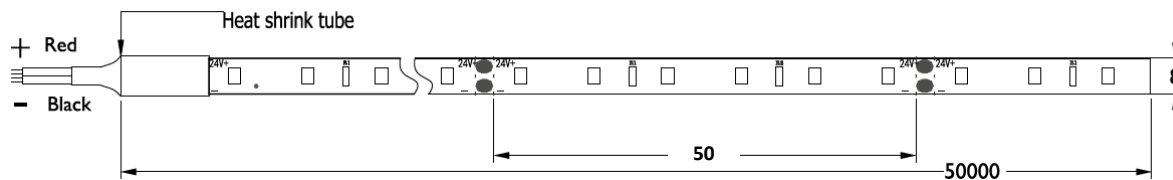
Philips LED strips will make any place stand out. Various color temperatures and up to five light outputs provide the tools you need to create the right atmosphere to suit any requirement – from an energizing office to atmospheric restaurant lighting, luxurious retail experiences to a relaxing hotel stay. Perfect for all applications where people need to feel comfortable and welcome.

Benefits

- The MASTER family offers various brightness and color options with high efficiency
- 5 years warranty
- Easy installation thanks to the flexible and durable material

Characteristics

- Lifetime: 60 000 hours
- CRI 90, SDCM ≤ 3
- IP20
- Five different luminous fluxes: 500 – 2 500 lm/m (at 4 000 K)
- Four color temperatures: 2 700 K – 6 500 K
- Length: 5 m
- Cutting length: 5 cm



Philips CorePro LEDstrip



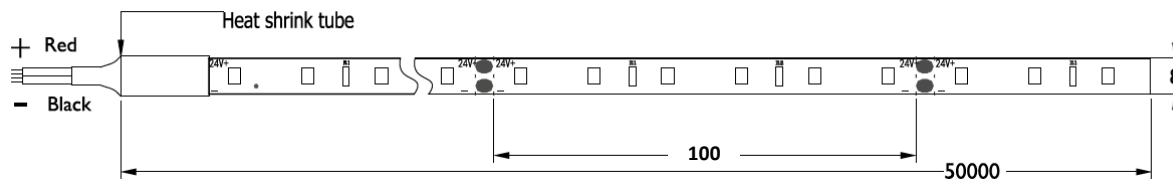
Philips LED strips will make any place stand out. Various color temperatures and up to five light outputs provide the tools you need to create the right atmosphere to suit any requirement – from an energizing office to atmospheric restaurant lighting, luxurious retail experiences to a relaxing hotel stay. Perfect for all applications where people need to feel comfortable and welcome.

Benefits

- The CorePro family is an economical solution, ideal for everyday lighting requirements
- 3 years warranty
- Easy installation thanks to the flexible and durable material

Characteristics

- Lifetime: 35 000 hours
- CRI 80, SDCM ≤ 5
- IP20
- Four different luminous fluxes: 300 – 1 600 lm/m (at 4 000 K)
- Four color temperatures: 2 700 K – 6 500 K
- Length: 5 m
- Cutting length: 10 cm



Codes for Philips MASTER LEDstrip

12NC	Product name
929002696302	MAS LEDstrip 4.3W927 475LM/M 5M
929002696402	MAS LEDstrip 4.3W930 475LM/M 5M
929002696502	MAS LEDstrip 4.3W940 500LM/M 5M
929002696602	MAS LEDstrip 4.3W965 500LM/M 5M
929002696702	MAS LEDstrip 8.3W927 920LM/M 5M
929002696802	MAS LEDstrip 8.3W930 920LM/M 5M
929002696902	MAS LEDstrip 8.3W940 1000LM/M 5M
929002697002	MAS LEDstrip 8.3W965 950LM/M 5M
929002697102	MAS LEDstrip 12.5W927 1380LM/M 5M
929002697202	MAS LEDstrip 12.5W930 1380LM/M 5M
929002697302	MAS LEDstrip 12.5W940 1500LM/M 5M
929002697402	MAS LEDstrip 12.5W965 1450LM/M 5M
929002697502	MAS LEDstrip 16.6W927 1830LM/M 5M
929002697602	MAS LEDstrip 16.6W930 1830LM/M 5M
929002697702	MAS LEDstrip 16.6W940 2000LM/M 5M
929002697802	MAS LEDstrip 16.6W965 2000LM/M 5M
929002697902	MAS LEDstrip 21.3W927 2400LM/M 5M
929002698002	MAS LEDstrip 21.3W930 2400LM/M 5M
929002698102	MAS LEDstrip 21.3W940 2500LM/M 5M
929002698202	MAS LEDstrip 21.3W965 2450LM/M 5M

Philips CorePro LEDstrip



12NC	Product name
929002694702	CorePro LEDstrip 2.3W827 270LM/M 5M
929002694802	CorePro LEDstrip 2.3W830 270LM/M 5M
929002694902	CorePro LEDstrip 2.3W840 300LM/M 5M
929002695002	CorePro LEDstrip 2.3W865 300LM/M 5M
929002695102	CorePro LEDstrip 6W827 750LM/M 5M
929002695202	CorePro LEDstrip 6W830 750LM/M 5M
929002695302	CorePro LEDstrip 6W840 800LM/M 5M
929002695402	CorePro LEDstrip 6W865 780LM/M 5M
929002695502	CorePro LEDstrip 9.2W827 1080LM/M 5M
929002695602	CorePro LEDstrip 9.2W830 1080LM/M 5M
929002695702	CorePro LEDstrip 9.2W840 1200LM/M 5M
929002695802	CorePro LEDstrip 9.2W865 1180LM/M 5M
929002695902	CorePro LEDstrip 12.3W827 1450LM/M 5M
929002696002	CorePro LEDstrip 12.3W830 1450LM/M 5M
929002696102	CorePro LEDstrip 12.3W840 1600LM/M 5M
929002696202	CorePro LEDstrip 12.3W865 1580LM/M 5M

Accessory codes for Philips LEDstrip



12NC	Product name
929003167602	LS mounting clips IP20 50pcs EU
929003167702	LS corner connector IP20 50pcs EU
929003167802	LS tape-to-tape connector IP20 50pcs EU
929003167902	LS tape-to-wire connector IP20 50pcs EU

LS mounting clips



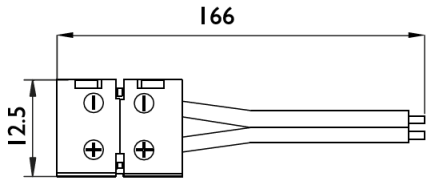
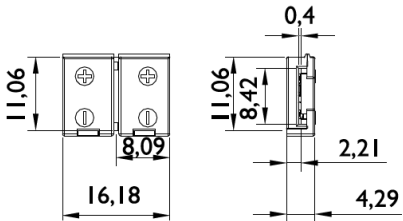
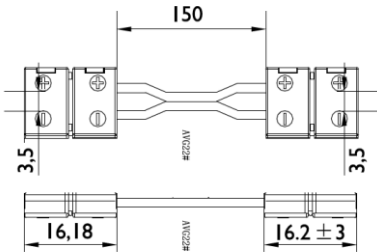
LS corner connector



LS tape-to-tape connector



LS tape-to-wire connector



Transformers codes for Philips LEDstrip



For Philips MASTER LEDstrip

12NC	Product name
929002105680	LED Transformer 40W 24VDC 120-277V
929002105980	LED Transformer 150W 24VDC 220-240V
913710032267	LED Transformer 60W 24VDC
913710032567	LED Transformer 120W 24VDC



For Philips CorePro LEDstrip

12NC	Product name
929003426480	CertaDrive LED Transformer 30W 24VDC
929003426580	CertaDrive LED Transformer 60W 24VDC
929003426680	CertaDrive LED Transformer 120W 24VDC
929003426780	CertaDrive LED Transformer 180W 24VDC



[Download the Philips LEDstrips Design Guide from **baltics.PartnerPortal.pro**](#)



Philips LED light sources Ultra Efficient portfolio



Philips MASTER LEDTube Ultra Efficient family



Philips MASTER LEDtube is a product with a unique design that creates a perfectly uniform visual appearance that is indistinguishable from a traditional fluorescent lamp. It is the right choice when it comes to absolute performance and adaptation to everyday conditions. Unrivalled savings due to low energy consumption and exceptionally long durability make it the right solution for any demanding application.

Benefits

- Family is now extended with 6 500 K and 3 000 K versions
- Ultra efficient 210lm/W
- Energy class A for 6 500 K
- New color temperatures of 3,000 K and 6,500 K

Characteristics

- Lifetime up to 100 000 hours
- CRI 80
- Plastic housing – truly shatterproof
- Rotating G13 end-caps ensure installation flexibility and uniform lighting
- Luminous flux – up to 3 700 lumens



Philips MASTER LEDTube Ultra Efficient family



Philips MASTER LEDtube is a product with a unique design that creates a perfectly uniform visual appearance that is indistinguishable from a traditional fluorescent lamp. It is the right choice when it comes to absolute performance and adaptation to everyday conditions. Unrivalled savings due to low energy consumption and exceptionally long durability make it the right solution for any demanding application.

12NC	Product name	Cap	Material	Voltage (Vac)	Wattage	Replaced Wattage (w)	CCT (K)	Lifetime (hours)	Dimmable	Beam angle (°)	Luminous flux (lm)	CRI	EEL label
929003731802	MAS LEDtube 1200mm UE 11.9W 865 T8 EELA	G13 ROT	Frosted Plastic	220-240	11.9 W	36 W	6 500	100 000	no	160	2 500	80	A
929003731902	MAS LEDtube 1500mm UE 17.6W 865 T8 EELA	G13 ROT	Frosted Plastic	220-240	17.6 W	58 W	6 500	100 000	no	160	3 700	80	A
929003745102	MAS LEDtube 1200mm UE 13.5W 830 T8	G13 ROT	Frosted Plastic	220-240	13.5 W	36 W	3 000	75 000	no	160	2 300	80	C
929003745202	MAS LEDtube 1500mm UE 20W 830 T8	G13 ROT	Frosted Plastic	220-240	20.0 W	58 W	3 000	75 000	no	160	3 400	80	C



Corepro T8 LEDtube Universal Ultra



Charactieristics:

- Universal power supply: EM, HF, & 230V
- Efficiency of 150 lm/W, which gives up to 68% energy savings compared to traditional fluorescent lamps
- Durability – 50 000 hours
- Made using technology that does not cause flickering



12NC	Product name	Cap	Wattage (W)	Replaced Wattage (W)	CCT (K)	Lifetime (hours)	Dimmable	Beam angle (°)	Luminous flux (lm)	CRI	Switch Cycle (times)	Starting time	EEL label
929003648102	CorePro LEDtube UN 1200mm UO 15.5W830 T8	G13	15.5	36	3 000	50 000	No	240	2 200	80	50 000	<0.5	D
929003648202	CorePro LEDtube UN 1200mm UO 15.5W840 T8	G13	15.5	36	4 000	50 000	No	240	2 400	80	50 000	<0.5	D
929003648302	CorePro LEDtube UN 1200mm UO 15.5W865 T8	G13	15.5	36	6 500	50 000	No	240	2 400	80	50 000	<0.5	D
929003648402	CorePro LEDtube UN 1500mm UO 23W830 T8	G13	23	58	3 000	50 000	No	240	3 200	80	50 000	<0.5	D
929003648502	CorePro LEDtube UN 1500mm UO 23W840 T8	G13	23	58	4 000	50 000	No	240	3 500	80	50 000	<0.5	D
929003648602	CorePro LEDtube UN 1500mm UO 23W865 T8	G13	23	58	6 500	50 000	No	240	3 500	80	50 000	<0.5	D

MASTER LEDtube T5 HO – 230 V



Product features:

- Only direct mains supply – 230 V
- Replacement for the conventional T5 HE 21 W, HO 24W/39 W
- Durability 50 000 hours and 5-year warranty
- Light distribution angle 200°
- Material: glass
- Efficiency 150 lm/W



12NC	Product name	Voltage (Vac)	Wattage (W)	Replaced Wattage (W)	CCT (K)	Lifetime (hours)	Dimmable	Beam angle (°)	Luminous flux (lm)	CRI	Switch Cycle (times)	Starting time	EEL label
929003734302	MAS LEDtube 600mm HO 10.5W 830 T5	220-240	10.5	24	3 000	50 000	No	200	1500	80	200 000	<0.5	D
929003734402	MAS LEDtube 600mm HO 10.5W 840 T5	220-240	10.5	24	4 000	50 000	No	200	1600	80	200 000	<0.5	D
929003734502	MAS LEDtube 600mm HO 10.5W 865 T5	220-240	10.5	24	6 500	50 000	No	200	1600	80	200 000	<0.5	D
929003734602	MAS LEDtube 900mm HO 18.5W 830 T5	220-240	18.5	39	3 000	50 000	No	200	2600	80	200 000	<0.5	D
929003734702	MAS LEDtube 900mm HO 18.5W 840 T5	220-240	18.5	39	4 000	50 000	No	200	2800	80	200 000	<0.5	D
929003734802	MAS LEDtube 900mm HO 18.5W 865 T5	220-240	18.5	39	6 500	50 000	No	200	2800	80	200 000	<0.5	D
929003734002	MAS LEDtube 900mm HE 11.5W 830 T5 EU	220-240	11.5	21	3 000	50 000	No	200	1600	80	200 000	<0.5	D
929003734102	MAS LEDtube 900mm HE 11.5W 840 T5 EU	220-240	11.5	21	4 000	50 000	No	200	1700	80	200 000	<0.5	D
929003734202	MAS LEDtube 900mm HE 11.5W 865 T5 EU	220-240	11.5	21	6 500	50 000	No	200	1700	80	200 000	<0.5	D

MASTER LED SON-T UE – a unique proposition on the market



The first Ultra Efficient lamp in the LED HID offer. The new Philips Master LED SON-T UE lamps offer an efficacy of >210 lm/W for the first time on the market, providing a highly efficient and long-lasting LED solution that replaces high-intensity discharge (HID) lamps. Thanks to its unique design with IP65 class, the MASTER LED SON-T UE lamp can be used in outdoor projects when connected to appropriate IP sockets.

Unique proposition on the market

- Patented High Power LED filament

- High light output
- High efficiency
- Uniform light distribution

Reasons to believe

Up to 9 000 lm
Up to 210 lm/W
50K hrs lifetime



2700



4000



50,000 hours



non-dimmable



*

- Unique Glass housing design

- Similar look & feel as conventional HID
- “PerfectFit” in existing HID luminaires
- Suitable for outdoor application

Clear glass finish
Designed according to HID size
LED filament, light all around



12NC	Product name	Lamp Type	Cap	Material	Voltage (Vac)	Wattage (W)	Replaced Wattage (W)	CCT (K)	Lifetime (Hours)	Dimmable	Beam angle (°)	Luminous flux (lm)	CRI	Switch Cycle (times)	Starting time	EEL label
929003677102	MAS LED SON-T UE M 3.6Klm 19W 727 E27	T46	E27	Clear Glass	220-240	19	50(SON T 50W)	2 700	50 000	No	300	3 600	70	50 000	<0.5	B
929003677202	MAS LED SON-T UE M 4Klm 19W 740 E27	T46	E27	Clear Glass	220-240	19	50(SON T 50W)	4 000	50 000	No	300	4 000	70	50 000	<0.5	A
929003677302	MAS LED SON-T UE M 5.4Klm 28.5W 727 E27	T46	E27	Clear Glass	220-240	28.5	70(SON T 70W)	2 700	50 000	No	300	5 400	70	50 000	<0.5	B
929003677402	MAS LED SON-T UE M 6Klm 28.5W 740 E27	T46	E27	Clear Glass	220-240	28.5	70(SON T 70W)	4 000	50 000	No	300	6 000	70	50 000	<0.5	A
929003677502	MAS LED SON-T UE M 8Klm 40W 727 E40	T52	E40	Clear Glass	220-240	42.8	100(SON T 100W)	2 700	50 000	No	300	8 000	70	50 000	<0.5	B
929003677602	MAS LED SON-T UE M 9Klm 42.8W 740 E40	T52	E40	Clear Glass	220-240	42.8	100(SON T 100W)	4 000	50 000	No	300	9 000	70	50 000	<0.5	A

CorePro Post-top LED HPL



Philips Corepro LED urban HPL lamps give you an affordable and easy payback solution to replace HID lamps in urban applications. The solution gives you the LED benefits of energy efficiency and a long lifetime, plus they come for a low initial investment. With a unique lamp design, you can enjoy the benefits HID LED HPL lamps in warm colors. Multiple lumen output options enhance the lighting distribution while creating a comfortable, safe, and high-productivity environment.

Product benefits:

- Save up to 60% energy with the benefits of high-efficiency LED solutions.
- Similar in appearance and function to traditional HIDs
- Construction entirely of glass
- Economical solution

Characteristics

- Direct mains power only
- High efficiency up to 147 lm/W
- Durability 25 000 hours
- Additional warm color 2 700 K



12NC	EAN	Product name	Cap	Bulb shape	Energy Consumption	CCT (K)	Beam angle (°)	Luminous flux (lm)	Lifetime (Hours)	EEL class	CRI	Switch Cycle (times)	Voltage (V)	Power Factor	Material	Efficacy (lm/w)
929003731102	8720169267770	TForce Core LED HPL 13W E27 827 FR	E27	ED75	13	2 700	330	1 800	25 000	D	80	50 000	220-240	0.5	Frosted Glass	138
929003731202	8720169267794	TForce Core LED HPL 18W E27 827 FR	E27	ED75	18	2 700	330	2 600	25 000	D	80	50 000	220-240	0.5	Frosted Glass	144
929003731302	8720169267817	TForce Core LED HPL 26W E27 827 FR	E27	ED90	26	2 700	330	3 600	25 000	D	80	50 000	220-240	0.9	Frosted Glass	138
929003731402	8720169267831	TForce Core LED HPL 36W E27 827 FR	E27	ED90	36	2 700	330	5 300	25 000	D	80	50 000	220-240	0.9	Frosted Glass	147
929003731502	8720169267855	TForce Core LED HPL 36W E40 827 FR	E40	ED90	36	2 700	330	5 300	25 000	D	80	50 000	220-240	0.9	Frosted Glass	147

CorePro LED SON-T



Philips Core LED Road SON-T lamps are an affordable and easy-to-use solution for replacing HID lamps in road applications. Thanks to the unique lamp design, you can enjoy the benefits of HID LED lamps in warm colors – even distribution of light while creating a comfortable, safe and efficient environment.

Product benefits:

- Save up to 60% energy with the benefits of high-efficiency LED solutions.
- Similar in appearance and function to traditional HIDs
- Construction entirely of glass
- Economical solution

Characteristics

- Direct mains power only
- High efficiency up to 162 lm/W
- Durability 25 000 hours
- Additional warm color 2 700 K



12NC	EAN	Product name	Cap	Energy Consumption	CCT (K)	Beam angle (°)	Luminous flux (lm)	Lifetime (Hours)	EEL class	CRI	Switch Cycle (times)	Voltage (V)	Power Factor	Material	Efficacy (lm/w)
929003730802	8720169267718	TForce Core LED road 17W 727 E27 MV	E27	17	2 700	330	2 700	25 000	D	70	50 000	220-240	0.9	Clear Glass	158
929003730902	8720169267732	TForce Core LED road 26W 727 E27 MV	E27	26	2 700	330	4 000	25 000	D	70	50 000	220-240	0.9	Clear Glass	153
929003731002	8720169267756	TForce Core LED road 40W 727 E40 MV	E40	40	2 700	330	6 500	25 000	C	70	50 000	220-240	0.9	Clear Glass	162

A-Class Spot: UltraEfficient GU10 50W 36D



Improvements introduced:

- Lifetime 50 000 hours
- Lower energy consumption compared to a regular LED spot

Characteristics

- Replacement for 50 W halogen GU10
- 2 700 K, 3 000 K and 4 000 K options
- CRI >80



2700/3000/4000



50,000 hours



CRI

A
Class

New Label	
Class	Lm/W
A	210
B	185
C	160
D	135
E	110
F	85
G	0



12NC	Predecessor	Product name
929003634602		MAS LEDspot UE 2.1-50W GU10 ND 827 EELA
929003610002	929003163102	MAS LEDspot UE 2.1-50W GU10 ND 830 EELA
929003610102	929003163202	MAS LEDspot UE 2.1-50W GU10 ND 840 EELA

Ultra Efficient Philips LED bulbs – non-dimmable

Technological breakthrough:

- High efficiency LED by 50% compared to regular LED bulbs
- Special STEM design allows components to be connected inside to obtain a full glass effect

Characteristics:

- Efficiency 210 lm/W – compared to standard LED bulbs, it consumes 60% less energy
- Durability of 50 000 hours – compared to the most common durability of 15 000 hours in the standard offer of LED bulbs



	Sept 1st Class	Sept 1st Lm/w
A	A	210
	B	185
	C	160
	D	135
	E	110
	F	85
	G	0

Ultra-Efficient Lighting

12NC	Predecessor 12NC	Product name	Bulb shape	Cap	Material	Voltage (Vac)	Wattage (W)	Replaced Wattage (W)	CCT (K)	Lifetime (Hours)	Dimmable	Luminous flux (lm)	CRI	Switch Cycle (times)	Starting time	EEL label
929003622702		MAS LEDBulbND2.3-40W E27 827 A60 CL G UE	A60	E27	Clear Glass	220-240	2.3	40	2700	50.000	No	485	80	50.000	<0.5	A
929003622902		MAS LEDBulbND2.3-40W E27 827 A60 FR G UE	A60	E27	Frosted Glass	220-240	2.3	40	2700	50.000	No	485	80	50.000	<0.5	A
929003623102	929003066502	MAS LEDBulbND2.3-40W E27 840 A60 CL G UE	A60	E27	Clear Glass	220-240	2.3	40	4000	50.000	No	485	80	50.000	<0.5	A
929003623302		MAS LEDBulbND2.3-40W E27 840 A60 FR G UE	A60	E27	Frosted Glass	220-240	2.3	40	4000	50.000	No	485	80	50.000	<0.5	A
929003623502		MAS LEDBulbND4-60W E27 827 A60 CL G UE	A60	E27	Clear Glass	220-240	4	60	2700	50.000	No	840	80	50.000	<0.5	A
929003623702		MAS LEDBulbND4-60W E27 827 A60 FR G UE	A60	E27	Frosted Glass	220-240	4	60	2700	50.000	No	840	80	50.000	<0.5	A
929003623902	929003066802	MAS LEDBulbND4-60W E27 840 A60 CL G UE	A60	E27	Clear Glass	220-240	4	60	4000	50.000	No	840	80	50.000	<0.5	A
929003624102	929003480102	MAS LEDBulbND4-60W E27 840 A60 FR G UE	A60	E27	Frosted Glass	220-240	4	60	4000	50.000	No	840	80	50.000	<0.5	A
929003624302		MAS LEDBulbND5.2-75W E27 827 A60 CL G UE	A60	E27	Clear Glass	220-240	5.2	75	2700	50.000	No	1095	80	50.000	<0.5	A
929003624502		MAS LEDBulbND5.2-75W E27 827 A60 FR G UE	A60	E27	Frosted Glass	220-240	5.2	75	2700	50.000	No	1095	80	50.000	<0.5	A
929003624702	929003480502	MAS LEDBulbND5.2-75W E27 840 A60 CL G UE	A60	E27	Clear Glass	220-240	5.2	75	4000	50.000	No	1095	80	50.000	<0.5	A
929003624902		MAS LEDBulbND5.2-75W E27 840 A60 FR G UE	A60	E27	Frosted Glass	220-240	5.2	75	4000	50.000	No	1095	80	50.000	<0.5	A
929003625102		MAS LEDBulbND7.3-100W E27 827 A60 CL GUE	A60	E27	Clear Glass	220-240	7.3	100	2700	50.000	No	1535	80	50.000	<0.5	A
929003625302		MAS LEDBulbND7.3-100W E27 827 A60 FR GUE	A60	E27	Frosted Glass	220-240	7.3	100	2700	50.000	No	1535	80	50.000	<0.5	A
929003625502	929003480702	MAS LEDBulbND7.3-100W E27 840 A60 CL GUE	A60	E27	Clear Glass	220-240	7.3	100	4000	50.000	No	1535	80	50.000	<0.5	A
929003625702	929003480302	MAS LEDBulbND7.3-100W E27 840 A60 FR GUE	A60	E27	Frosted Glass	220-240	7.3	100	4000	50.000	No	1535	80	50.000	<0.5	A
929003625902		MAS LEDCandleND2.3-40W E14 827 B35CL GUE	B35	E14	Clear Glass	220-240	2.3	40	2700	50.000	No	485	80	50.000	<0.5	A
929003626002	929003480902	MAS LEDCandleND2.3-40W E14 840 B35CL GUE	B35	E14	Clear Glass	220-240	2.3	40	4000	50.000	No	485	80	50.000	<0.5	A
929003626102		MAS LEDLusterND2.3-40W E14 827 P45CL GUE	P45	E14	Clear Glass	220-240	2.3	40	2700	50.000	No	485	80	50.000	<0.5	A
929003626202		MAS LEDLusterND2.3-40W E27 827 P45CL GUE	P45	E27	Clear Glass	220-240	2.3	40	2700	50.000	No	485	80	50.000	<0.5	A
929003626402		MAS LEDLusterND2.3-40W E14 840 P45CL GUE	P45	E14	Clear Glass	220-240	2.3	40	4000	50.000	No	485	80	50.000	<0.5	A
929003626502		MAS LEDLusterND2.3-40W E27 840 P45CL GUE	P45	E27	Clear Glass	220-240	2.3	40	4000	50.000	No	485	80	50.000	<0.5	A
929003642402		MAS LEDBulbND4-60W E27 827 ST64 CL G UE	ST64	E27	Clear Glass	220-240	4	60	2700	50.000	No	840	80	50.000	<0.5	A
929003642502		MAS LEDBulbND4-60W E27 827 G95 CL G UE	G95	E27	Clear Glass	220-240	4	60	2700	50.000	No	840	80	50.000	<0.5	A
929003642602		MAS LEDBulbND4-60W E27 840 G95 CL G UE	G95	E27	Clear Glass	220-240	4	60	4000	50.000	No	840	80	50.000	<0.5	A
929003702502	929003066402	MAS LEDBulbND2.3-40W E27 830 A60 CL G UE	A60	E27	Clear Glass	220-240	2.3	40	3000	50.000	No	485	80	50.000	<0.5	A
929003702702		MAS LEDBulbND2.3-40W E27 830 A60 FR G UE	A60	E27	Frosted Glass	220-240	2.3	40	3000	50.000	No	485	80	50.000	<0.5	A
929003702902	929003066702	MAS LEDBulbND4-60W E27 830 A60 CL G UE	A60	E27	Clear Glass	220-240	4	60	3000	50.000	No	840	80	50.000	<0.5	A
929003703102	929003480002	MAS LEDBulbND4-60W E27 830 A60 FR G UE	A60	E27	Frosted Glass	220-240	4	60	3000	50.000	No	840	80	50.000	<0.5	A
929003703302	929003480402	MAS LEDBulbND5.2-75W E27 830 A60 CL G UE	A60	E27	Clear Glass	220-240	5.2	75	3000	50.000	No	1095	80	50.000	<0.5	A
929003703502		MAS LEDBulbND5.2-75W E27 830 A60 FR G UE	A60	E27	Frosted Glass	220-240	5.2	75	3000	50.000	No	1095	80	50.000	<0.5	A
929003703702	929003480602	MAS LEDBulbND7.3-100W E27 830 A60 CL GUE	A60	E27	Clear Glass	220-240	7.3	100	3000	50.000	No	1535	80	50.000	<0.5	A
929003703902	929003480202	MAS LEDBulbND7.3-100W E27 830 A60 FR GUE	A60	E27	Frosted Glass	220-240	7.3	100	3000	50.000	No	1535	80	50.000	<0.5	A

Ultra Efficient Philips LED bulbs - dimmable


Thanks to innovation, we introduce dimmable Class A LED bulbs to the market. Extremely efficient and long life, it can help reduce energy consumption and waste. Product from the sustainable development offer.

Technological breakthrough:

- High efficiency LED by 50% compared to regular LED bulbs
- Designed for high dimming efficiency and compatibility with triac dimmers

Characteristics:

- Efficiency 210 lm/W – compared to standard LED bulbs, it consumes 50% less energy
- Durability of 50 000 hours – compared to the most common durability of 15,000 hours in the standard offer of LED bulbs



Sept 1st Class	Sept 1st Lm/w
A	210
B	185
C	160
D	135
E	110
F	85
G	0



dimmable



50,000 hours



CRI



12NC	Predecessor 12NC	Product name	Bulb shape	Cap	Material	Voltage (Vac)	Wattage (W)	Replaced Wattage (W)	CCT (K)	Lifetime (Hours)	Dimmable	Luminous flux (lm)	CRI	Switch Cycle (times)	Starting time
929003691502	MAS LEDBulb D 4-60W E27 827 A60 CL G UE	A60	E27	Clear Glass	220-240	4	60	2 700	50 000	Dim	840	80	50 000	<0.5	A
929003691602	MAS LEDBulb D 4-60W E27 827 A60 FR G UE	A60	E27	Frosted Glass	220-240	4	60	2 700	50 000	Dim	840	80	50 000	<0.5	A
929003691702	MAS LEDBulb D 4-60W E27 830 A60 CL G UE	A60	E27	Clear Glass	220-240	4	60	3 000	50 000	Dim	840	80	50 000	<0.5	A
929003691802	MAS LEDBulb D 4-60W E27 830 A60 FR G UE	A60	E27	Frosted Glass	220-240	4	60	3 000	50 000	Dim	840	80	50 000	<0.5	A

High Lumen Glass Bulb - new products in a family

New variants of the CorePro Glass High Lumen Non-dim family:

- Color temperature of 2 700 K or 4 000 K
- Available variants that replace 120 W and 150 W traditional light bulbs

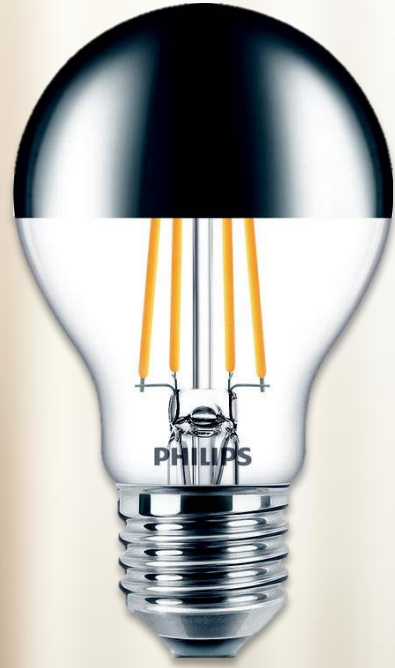
Benefits

- Classic design
- Replacement of traditional light bulbs
- Savings ~90% compared to traditional bulbs
- Service life up to 15 000 hours



New Label	
Class	Lm/W
A	210
B	185
C	160
D	135
E	110
F	85
G	0

12NC	Material description	Bulb shape	Cap	Material	Voltage (Vac)	Wattage (W)	Replaced Wattage (W)	CCT (K)	Lifetime (hours)	Dimmable	Luminous flux (lm)	CRI	Switch Cycle (times)	Starting time	EEL label
929002371502	CorePro LEDBulbND 120W E27 A67 827 CL G	A67	E27	Clear Glass	220-240	13	120	2 700	15 000	No	2000	80	20 000	<0.5	D
929002371602	CorePro LEDBulbND 120W E27 A67 840 CL G	A67	E27	Clear Glass	220-240	13	120	4 000	15 000	No	2000	80	20 000	<0.5	D
929002372402	CorePro LEDBulbND 150W E27 A67 840 CL G	A67	E27	Clear Glass	220-240	17	150	4 000	15 000	No	2452	80	20 000	<0.5	D



Philips MASTER Value Glass LED bulb

Philips MAS VLE LEDBulbD7.2-50W E27 A60 827 CM G



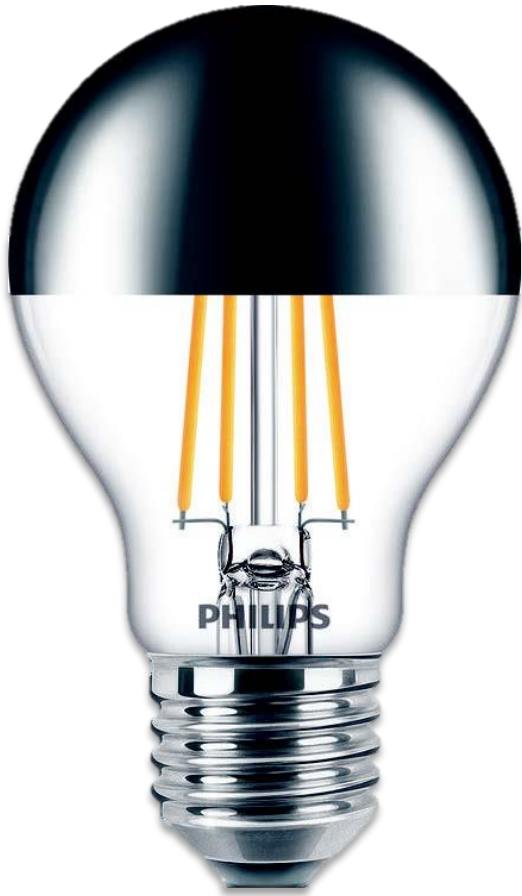
Philips MASTER Value Glass LED bulb is an LED bulb with a traditional design offering greater energy savings than regular glass LED bulbs. They provide a good lighting experience and are dimmable. Perfect for hanging above a table in a restaurant or office kitchen.

Benefits

- Material: glass
- Light efficiency 90 lm/W
- EyeComfort technology
- Dimmable with selected dimmers
- Warm color of white light
- Replacement for 50 W bulbs

Characteristics

- Lifetime: 15 000 hours, 20 000 on/off cycles
- CRI 80
- IP20
- Luminous flux: 650 lm
- Color temperature: 2 700 K
- A60, E27



12NC	Product name
929002412802	MAS VLE LEDBulbD7.2-50W E27 A60 827 CM G

Signify